

FLOOD CONTROL

The original storm drain system was developed in the early 20th century. As the City began to grow, rainwater that was once absorbed by miles of undeveloped land began to run off the newly paved and developed areas, leading to an increased amount of water flowing into streams.

These streams could not contain the increased amount of water and flooded. In response, many streams were lined with concrete, initiating the development of an underground urban drainage system. As the City and County of Honolulu continued to grow, a complex drainage system developed.

Today, more than 20,000 catch basins, almost 700 miles of underground pipes and open channels comprise the City's storm drain system. Runoff from the City system reaches the ocean through approximately 2,200 storm drain outfalls or openings at the end of a storm drain system that allows water to flow into a channel, stream or the ocean.

POLLUTANTS FOUND IN THE STORM DRAIN SYSTEM

City crews have found an unusual collection of items that have been dumped or have made their way into storm drain channels. These items include:

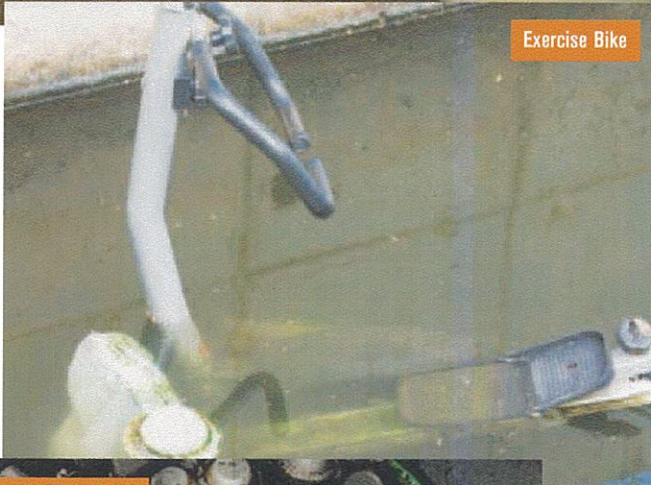
- Chicken Cages
- Surfboards
- Motorcycle
- Soiled Diapers
- Automotive Parts
- Mattresses
- Stuffed Animals
- Exercise Bike
- Shopping Carts
- Basketballs, Baseballs, and Golf Balls
- Baby Strollers



Diapers



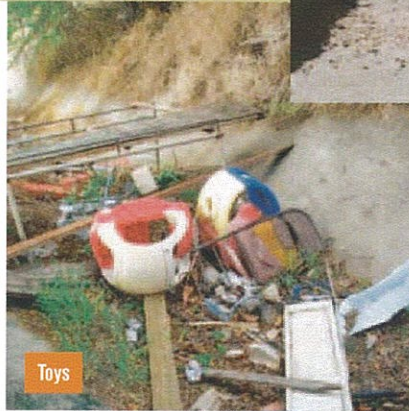
Chicken Cages



Exercise Bike



Dog Doo



Toys



Surfboard in Catch Basin



Motorcycle